

## Fact

**A susu screen every 2 years is the best way to find susu cancer early.**



## Susu screening saves lives

For more information or to make an appointment, visit us at

**[breastscreen.qld.gov.au](http://breastscreen.qld.gov.au)**  
**call 13 20 50**

or talk to your local health centre

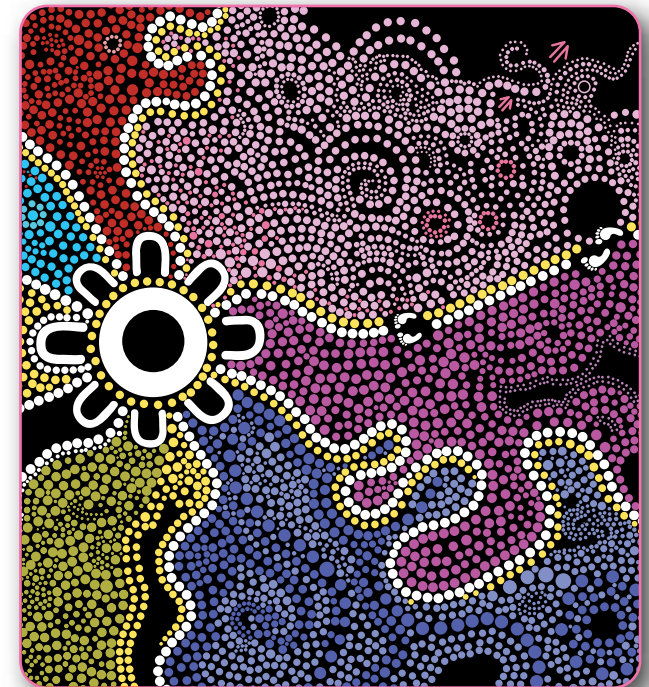
When you book your appointment please let us know if you would like an Aboriginal or Torres Strait Islander Health Worker to come to your appointment with you.

The Queensland Health BreastScreen Queensland Program would like to acknowledge artists: Julie Haysom for her coloured drawings and Yvonne Williams for her artwork titled "Women Gathering".



**Queensland  
Government**

## Susu (Breast) Screening



*Women Gathering*



**Queensland  
Government**

## What is a susu screen?

A susu screen looks for cancer cells that can make you sick.

It is an XRAY picture of the inside of your susu. It is called a mammogram. It can help find unhealthy cancer cells. A special XRAY machine takes the pictures. It only takes a few minutes.



## Where can I get a susu screen?

You can have a susu screen with BreastScreen Queensland at over 200 sites. It's free and you do not need a doctors referral.

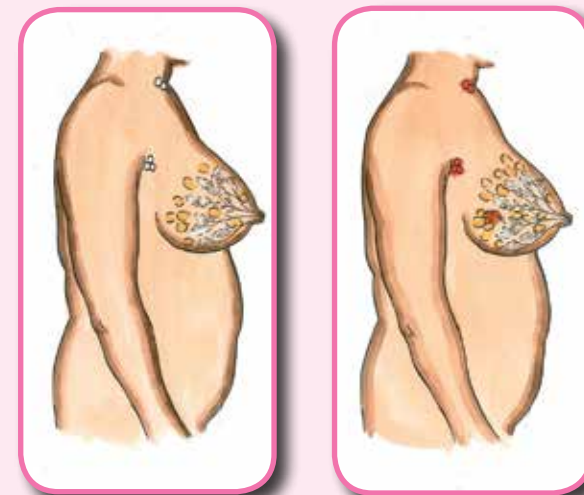
Local Clinics can be found at Gympie, Maroochydore, Noosaville, Nambour, Caloundra and Caboolture.

Our bus also visits Tin Can Bay, Cooroy, Beerwah, Maleny, Kilcoy, Kenilworth, Bribie Island, Nambour Mill, Kawana, Forest Glen, Sippy Downs and Morayfield every year.



## What is susu cancer?

Susu cancer is unhealthy cancer cells that grow in your susu. These unhealthy cancer cells can make you very sick.



## Who can have a susu screen?

**YES** ✓



**Women 40 and over**

**NO** ✕



**Women under 40**

If you are under 40 and have any concerns about your susu please contact your doctor without delay.

## How often should I have a susu screen?

Every 2 years. You will get a letter to remind you when you are due. It is also good to check your susu's by looking in a mirror and feeling for any changes. If you find a breast lump, nipple discharge or any breast changes that concern you, please contact your doctor or health worker straight away.



The unhealthy cancer cells need to be taken out so the cancer does not grow and travel to other parts of your body. If it is found early it is easier to treat.

**A susu screen can pick up changes that are too small to see or feel.**

**Most susu changes are NOT cancer.**