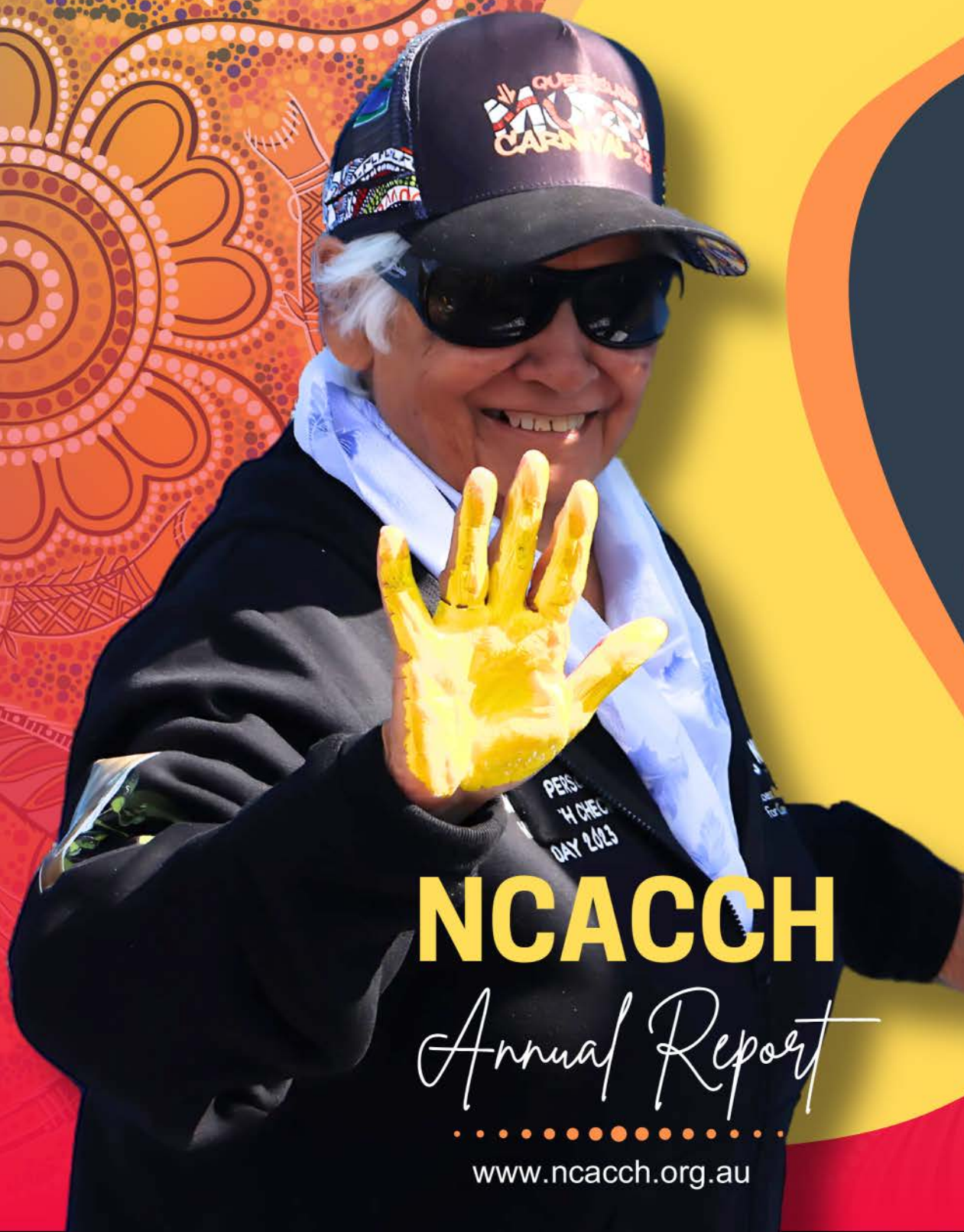




North Coast Aboriginal Corporation  
for Community Health



**NCACCH**

*Annual Report*

[www.ncacch.org.au](http://www.ncacch.org.au)

2023-24





## North Coast Aboriginal Corporation for Community Health

ABN: 53 413 469 595

ACNC registered

Deductible Gift Recipient (DGR) Status

ISO 9001:2015 Quality Certified Organisation

RACGP Accredited Practice

RACGP General Practice Training Accredited



### **Annual Report Content & Design: Paul Penumala / Tim Lester**

Content created in 2024 | All rights reserved.

No part of this annual report may be reproduced, stored in a retrieval system, or transmitted, in any form or by any means, electronic, mechanical, photocopying, recording, or otherwise, without prior permission of NCACCH.

The Annual Report for the fiscal year 2023-2024 is a publication of North Coast Aboriginal Corporation for Community Health.

Printed and bound in Sunshine Coast, Queensland.

For permissions or inquiries, please contact:

Paul Penumala / Tim Lester

[admin@ncacch.org.au](mailto:admin@ncacch.org.au)

07-5346 9800,

8/8, Innovation Parkway, Birtinya, Qld 4575

**Disclaimer:** The information presented in this report is for general informational purposes only. NCACCH makes no representations or warranties regarding the accuracy, completeness, or suitability of the information contained herein.

The information provided about any deceased individuals is intended to acknowledge their contributions and achievements during this period. It is presented with the utmost sensitivity and respect for their memory.





# Acknowledgement *to Country*

North Coast Aboriginal Corporation for Community Health would like to acknowledge that we operate and function on the lands of the Kabi Kabi / Gubbi Gubbi and Jinibarra peoples. We pay respect to these lands and water and all that they provide us.

We pay respects to the ancestors that walked and managed these lands and water for many generations before us and we recognise all Aboriginal and/or Torres Strait Islander people who have come from their own Country and who now call this Country their home.

We acknowledge our Elders past and present, who are the knowledge holders and teachers. We acknowledge our youth who are our hope for a brighter and stronger future and who will be our future leaders.

We pay respects to our community members who have gone before us and recognise their contribution to our people and community.





## *Other Acknowledgements*

### **NCACCH gratefully acknowledges the support rendered by:**

Australian Government, Department of Health

Country To Coast Queensland (PHN)

Queensland Health

Queensland Aboriginal and Islander Health Council

National Aboriginal Community Controlled Health Organisation

### **Disclaimer:**

NCACCH has taken all reasonable steps to ensure that the content of this Annual Report is accurate, considerate, aware and sensitive to the needs of our community and the wider Aboriginal and/or Torres Strait Islander population.

Aboriginal and/or Torres Strait Islander people should be aware that this report may contain names of deceased persons.



# Contents

<b>Strategic Matters</b>	1	Chair's Message .....	07
	2	Highlights of the Year .....	08
	3	Our Vision, Purpose & Values .....	09
	4	Strategic Plan .....	10
	5	Our Directors .....	11
	6	Pulse - Executive Update .....	16
<b>Community Engagement</b>	7	Financial Membership .....	21
	8	Community Survey .....	22
	9	Well Persons Health Check Day .....	24
	10	CTG day .....	26
	11	Youth Day .....	26
	12	SEWB Launch Day .....	28
	13	Health Equity .....	29
<b>NCACCH Services</b>	14	NCACCH Dashboard .....	31
		<b>Clinical</b>	
	15	Gympie Aboriginal Medical Service .....	32
	16	Chronic Program Disease Management..	33
	17	Special Projects.....	35
		<b>Community</b>	
	18	Community Health Services .....	40
	19	Gympie Family Hub .....	45
	20	Men's & Women's Group.....	46
		<b>Corporate</b>	
	21	Marketing and HR.....	47
	22	Brokerage .....	52
	23	Quality & Compliance.....	53
	24	Financial Position .....	54





# STRATEGIC

*Matters*





# CHAIRS *Message*

On behalf of the Board of Directors, I am pleased to present our Annual Report for the 2023/24 year. Over the past year, we have continued to build our workforce, service expansion and financial sustainability. We remain committed to our approach in providing holistic and culturally appropriate services to our community, shaped by the needs and aspirations of our people.

This year has once again been one of challenges, however we must not let them overshadow the many great successes NCACCH has achieved. Despite ongoing issues such as workforce shortages, increased service demand and decreases in General Practices bulk billing, our team has demonstrated incredible resilience and commitment.

Some of our key achievements include:

1. Long term funding for the Gympie Aboriginal Medical Service
2. Fit out funds to establish a mobile health clinic
3. Commencement of dietitian, pharmacy, mental health and school readiness clinics
4. Successful one-off funding for Elder Care Support, Covid-19 transition, Post Referendum Mental Health Support and Rheumatic Heart Disease Screening Support



These achievements are a testament to the hard work our staff, the guidance of our Elders and community and the strength of our partnerships across our region. We also thank our members for their support as we continue to work towards Closing the Gap in health and well-being, education, employment and empowerment through shared decision-making.

Looking ahead into the future, we remain committed to advocating for the rights and well-being of our people by continuing to expand and diversify our service delivery in areas such as; increased 100% bulk billed Aboriginal Medical Service clinics, child and maternal health programs, social, emotional and well-being programs and improved pipeline opportunities for employment opportunities in the community control sector.



**CEO: Sharelle  
Eggmolesse**

**Chair:  
Kerry Staines**

We know that true change comes from empowering our community, honouring our cultural knowledge and maintaining community control over our services and look forward to walking this path of self-determination in the strength of our community. In closing, I would like to thank my fellow Directors, our staff, volunteers, members and community for their unwavering dedication and support. Our journey is one of shared responsibility, and I am grateful for the role each of you play in shaping NCACCH's future.

A handwritten signature in blue ink, appearing to read 'Kerry Staines'.

**Kerry Staines  
Chairperson**



# Highlights of the Year

The past financial year has been marked by significant achievements for NCACCH as we continue our commitment to providing comprehensive healthcare services and support to Aboriginal and/or Torres Strait Islander communities. Some key milestones include:

**Securing Long-term Funding for Gympie Aboriginal Medical Service:** We successfully obtained long-term funding to secure the future operations of the Gympie Aboriginal Medical Service, which will allow us to expand essential healthcare services to the community.

**Fit-out Funds for Mob Pod (Mobile Health Clinic):** In a major step forward for accessibility and outreach, NCACCH received dedicated funds for the fit-out of the Mob Pod, our mobile health clinic. This initiative will enable us to bring healthcare directly to rural and underserved areas, ensuring more equitable access to vital health services.

**Expansion of Specialist Clinics:** This year saw the commencement of several new clinics, broadening the scope of care provided to our communities. These include a dietitian clinic, pharmacy services, mental health support, and school readiness programs, addressing key health and well-being needs.

**Targeted One-off Funding Successes:** NCACCH successfully obtained one-off funding for a number of critical programs, such as:

**Elder Care** Support to enhance aged care services for Aboriginal and/or Torres Strait Islander Elders.

**Covid-19** Transition Programs ensuring a smooth transition post-pandemic.

Post-Referendum **Mental Health** Support, addressing community mental health in the aftermath of the referendum.

**Rheumatic Heart Disease** Screening Support, aiming to reduce the impact of this preventable disease in our community.

These achievements show NCACCH's dedication to closing the health gap and improving the overall well-being of Aboriginal and/or Torres Strait Islander people in our regions. Looking ahead, we remain focused on expanding our services, forging new partnerships, and delivering culturally appropriate, high-quality care.



## Our Vision

To improve the health and well-being of our community through the provision of **culturally safe, responsive and inclusive** services.

Striving to excel in the provision of **accessible, equitable and necessary** resources for our Aboriginal and Torres Strait Islander community and their families.

## Our Purpose

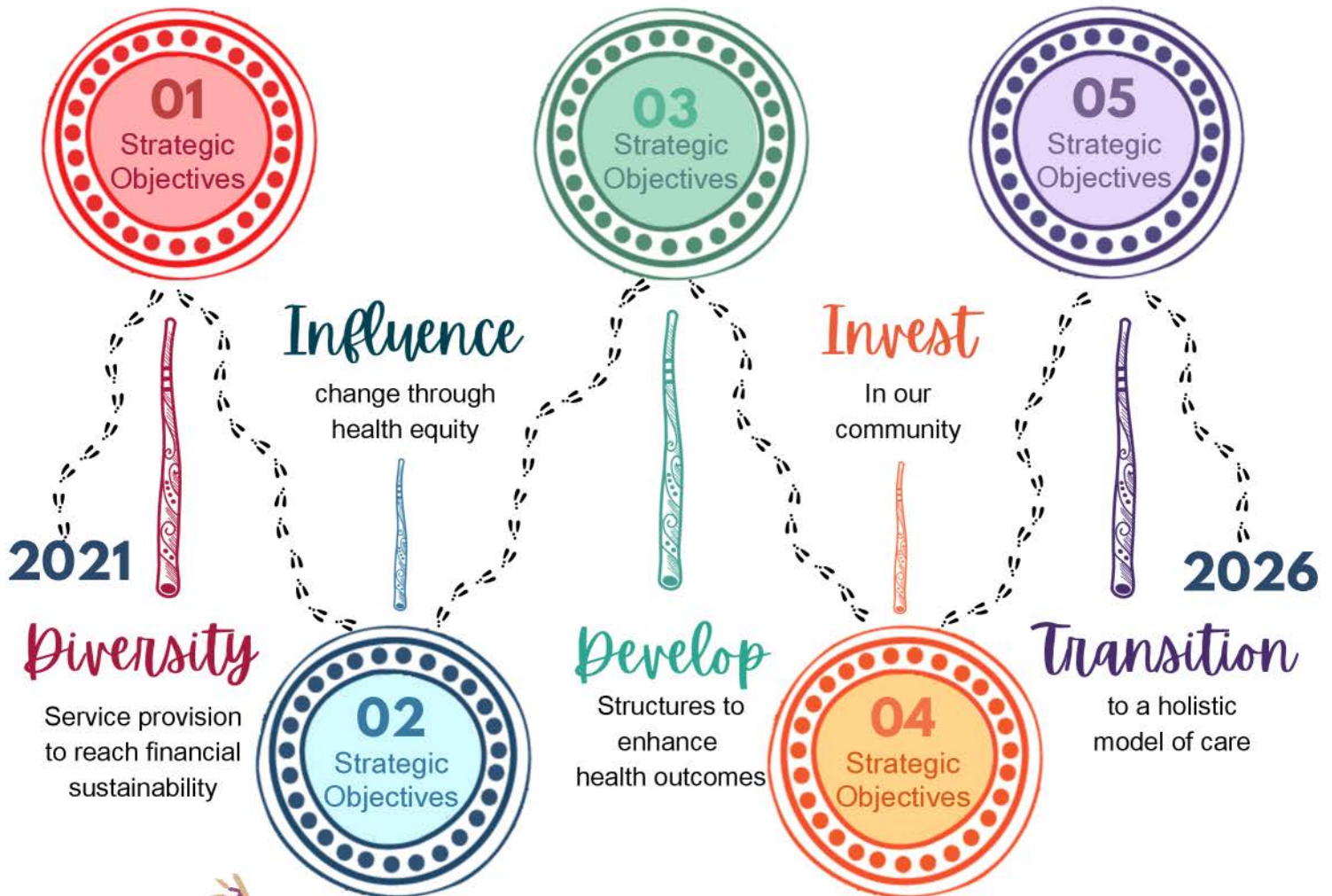
## Our Values

Our values seek to ensure our core business is culturally inclusive, culturally safe, culturally sensitive and has **community need at the forefront** of all decisions.

VALUES	BELIEF STATEMENT
RESPECT	WE BELIEVE AND ACCEPT EACH OTHER AS EQUALS AND HONOUR OUR CULTURAL DIFFERENCES.
INNOVATION	WE BELIEVE WE MUST CONSTANTLY SEEK NEW WAYS OF DELIVERING EXCELLENCE TO SERVE OUR COMMUNITY.
DIVERSITY	WE BELIEVE WE THRIVE AND PROGRESS BECAUSE OF OUR UNIQUENESS.
TRANSPARENCY	WE BELIEVE OPENNESS MAKES US FEEL MORE CONNECTED, TRUSTED AND ACCOUNTABLE.
SAFETY	WE HAVE A DUTY TO PROTECT OUR CLIENTS, STAFF AND ORGANISATION SO WE CAN CONTINUE TO SUPPORT OUR COMMUNITY.
INTEGRITY	WE BELIEVE WE MUST SHOW THE COURAGE DO THE RIGHT THING.
COLLABORATION	WE BELIEVE WORKING TOGETHER MAKES US ALL STRONGER AND MORE EFFECTIVE FOR OUR COMMUNITY.



# Strategic PLAN



## #weDIDIT



# YOUR Directors



Lachlan Anderson  
**Director**



Uncle Henry Neill  
**Director**



Paula Wootton  
**Director**



Kerry Staines  
**Chairperson**



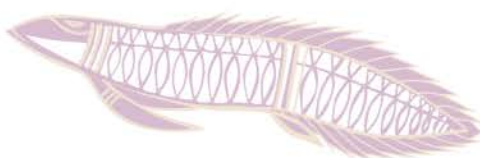
Rhonda Randall  
**Director**



Karen Kennedy  
**Director**



MarkGlenn Harmony  
**Interim Director**





# Get To Know **YOUR** Directors

- Kerry is a descendant of the Mandandanji people
- Energised by leading business to create and deliver positive change
- Advocates how important bridging the gap to bring appropriate health services and education to our communities is vital for our people and future generations.
- Intricately involved in the National Disability Insurance Scheme (NDIS)
- Passionate about helping Indigenous people, their communities and their culture to thrive

## **Kerry Staines - Chairperson**

**6** / 7

**Board meetings  
attended**

## **MarkGlenn Harmony - Interim Director**

**4** / 4

**Board meetings  
attended**

- MarkGlenn is a descendent of the Kaneang mob, Indigenous Noongar people from southwestern Australia, and has lived on the Sunshine Coast since 2009.
- Active advocate for health, welfare, and safety, with a public service background at both state and federal levels.
- Holds qualifications in Business and Psychology, utilizing skills to improve community health initiatives.
- Strongly connected to the land and artistic expression, influenced by extensive travels across Australia.
- Focuses on combating injustice, prejudice, and systemic issues, representing the interests of his community.

**Commenced as interim  
Board Member 7/12/23**

- Paula is a Tharawal woman from the Woollongong/Shoalhaven Heads region NSW and has lived in Imbil for over 16 years
- Active NCACCH Board Member since 2007 and has a Certificate IV in Governance
- Strong focus on young people and families
- Substantial experience working within schools and community organisations and represents the Mary Valley community

## **Paula Wootton - Director**

**6** / 7

**Board meetings  
attended**



# Get to know **YOUR** Directors

- Rhonda is a Barindji woman from Bourke and has resided in the Glasshouse Mountains region for over 20 years
- Rhonda joined the NCACCH Board in 2006 and has a Certificate IV in Governance
- Rhonda offers knowledge and experience in education and Home and Aged Care
- Rhonda provides connection to the hinterland community

**Rhonda Randall -  
Director**

**5** /7

**Board meetings  
attended**

**Uncle Henry  
Neill - Director**

**4** /7

**Board meetings  
attended**

- Henry proudly identifies as an Indigenous Australian South Sea Islander with Torres Strait Islander heritage
- Vast experience in Teaching at Early childhood, Primary and Secondary and at a University level
- Provides Guest Lectures to Undergraduate and post Graduate students in Education, Health, Journalism, Social Science, Human Services, Public Health and Paramedics
- Written several Cross-Cultural Communication programs for Commonwealth Departments and provides Aboriginal and Torres Strait Islander Cultural Awareness Training
- His family has lived locally since the 60's on his sons' Traditional Country

**Karen Kennedy -  
Director**

**7** /7

**Board meetings  
attended**

- Karen is a Yugambeh/Gubbi Gubbi woman who resides in Cooloola Cove and has been a NCACCH member since 2009
- Joined the NCACCH Board in 2022
- Actively engaged within her community through local school P&Cs, NAIDOC events, coordinating Indigenous workshops & volunteering at major NCACCH events
- Provides connection to the Tin Can Bay and Cooloola region through her proactive community involvement



# Get to know **YOUR** Directors

- Lachlan is a Quandamooka/Kullilli and Wakka Wakka man
- Holds Bachelor of Arts with a double major History/Australian studies and minor in Indigenous Studies, he also has a Post graduate degree in Migration Law
- Studying has allowed him to understand Indigenous and Non Indigenous governance, historical, cultural and socio economic and ethical and health issues that Aboriginal and Torres Strait Islander people may face
- Worked and lived within the Sunshine Coast, Fraser and Morten Bay regions for the last 13 years
- Well established and respectful connections to the traditional custodians of the region

## **Lachlan Anderson - Director**

**5** /7

**Board meetings  
attended**

## **Uncle Owen Norris - Farewell**

**3** /4

**Board meetings  
attended**

- Owen is a proud Gamilaroi man from the Gomeroi people
- Employed with the QLD Fire Services for 32 years, 20 years as an Executive Officer
- For the last 20 years managed his own business in the Health and Fitness industry
- An Elder with the Maroochydore Community Justice Group
- Has Diploma in Health, Frontline Management and Advance Diploma in Community Sector Management
- Desire to keep NCACCH strong, community focus and respected





# *Board* Progress Report

**07**

**Board Meetings**  
held this financial year

**03**

**Special Meetings**  
31st August 2023  
4th September 2023  
18 April 2024

**SGM**

(Special General Meeting)  
held in April 2024





We engaged with representatives from Commonwealth PHC Team and Queensland's First Nations Health branch, while also attending significant sector conferences, including three by QAIHC and two by NACCHO. These opportunities allowed us to stay informed about the latest developments in Aboriginal and/or Torres Strait Islander health and contribute our perspectives.

Over the past year, NCACCH executives have remained focused on strengthening stakeholder engagement and expanding our network. **Sharelle, Cristee, James and Paul** have been actively involved in numerous key meetings and events, ensuring consistency in our partnership-building efforts.



A highlight of the year was attending the National Health Executive Leaders Program, where we not only gained insights into leadership across the ACCHO sector but also experienced valuable personal growth. An unexpected but highly impactful experience came from learning leadership principles with the **Canberra Raiders** during their camp, with **direct insights from coach Ricky Stuart** himself.







NCACCH executives have worked tirelessly to secure ongoing funding for the Aboriginal Medical Service and launch several new projects, all aimed at significantly benefiting our community. We remain committed to ensuring the continued growth and sustainability of NCACCH's services.

On 30th April, NCACCH had the pleasure of hosting the First Nations Health Office (FNHO) from Queensland Health at our head office.

During the visit, Dane and Ben from FNHO learned about the impactful initiatives NCACCH is delivering within the community and our planned strategic future directions. It was a valuable exchange of insights, strengthening the collaborative relationship between NCACCH and Queensland Health.



From left to right: Cristee (GM - Health Services), Ben (FNHO - Policy & Planning), Dane (FNHO - Policy & Planning), and Paul (GM - Strategy & Service Development)

This year, Sharelle and Paul from NCACCH were invited by the Dean from the IT department at SRM Institute to attend their International Symposium on AI Technology in Chennai, India. The event was a memorable experience, particularly due to the technological advancements showcased by PhD students, which demonstrated how AI technology can be applied across rural and remote areas at an economical rate.







NCACCH was pleased to welcome staff from the Growing Deadly Families and the First Nations Health Office from Queensland Health, who manage our Making Tracks contract. The team visited our Gympie AMS clinic to gain a better understanding of our services and the challenges we face in the region.

This visit provided an opportunity for valuable discussions about how we can continue to collaborate and enhance healthcare delivery for our community.



In June 2024, we were pleased to welcome the Royal Australian College of General Practitioners (RACGP) to our Aboriginal Medical Service (AMS) in Gympie. During the visit, we had productive discussions focused on strategies to improve the recruitment of registrars to rural areas. This collaboration reflects our ongoing efforts to strengthen healthcare services in rural regions and ensure that Aboriginal and Torres Strait Islander communities have access to quality healthcare.



During this reporting period, Funding Arrangement Managers from the Department of Social Services (DSS), who manage our Indigenous Australians' Health Program (IAHP) contracts, visited our head office. This visit provided an opportunity for us to offer deeper insight into how we deliver our services and the unique challenges faced in the region. It was an invaluable exchange, helping the DSS team gain a better understanding of our operations and the specific needs of our community.



This photo features Paula and Rhonda (Board of Directors) alongside Paul (Executive) at the QAIHC Conference in December 2023, followed by the AGM. This event provided a platform for valuable discussions on health service delivery and community needs.



North Coast Aboriginal Corporation for Community Health  
"Your Pathway to Better Health"

## GYMPIE FAMILY HUB

*Community-Led initiative*



Improving the health outcomes of  
Aboriginal and Torres Strait Islander people



In this photo, taken at the Health Equity Conference - Nyina Budja in May 2024, Paul presented on the Community Consultation process that helped shape the success of the Gympie Family Hub, highlighting the collaborative efforts that brought together various elements to make the hub a key resource for the community.

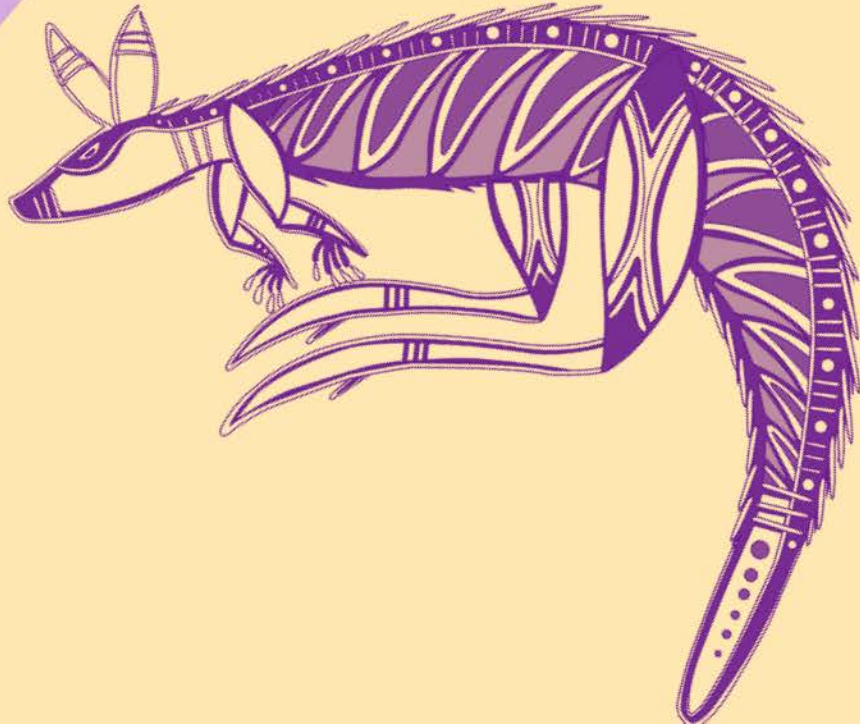


This photo captures Kyla (NCACCH staff) and the QAIHC staff visiting the Gympie Family Hub as part of the funding received for the QAIHC Youth Hubs initiative.



The visit showcased the work undertaken to support youth activities across both regions, demonstrating the impact of these initiatives on the community.





# Community

*Engagement*





# Financial Memberships

*As an Aboriginal Community Controlled Health Organisation (ACCHO), NCACCH places great importance on community involvement and input in shaping its operations. We wholeheartedly urge all Aboriginal and/or Torres Strait Islander clients to consider becoming financial members of NCACCH.*

*Your membership not only strengthens our organisation but also ensures that your voice plays a pivotal role in guiding our initiatives and services. By joining as a member, you actively contribute to the collective effort of improving the health and well-being of our community, fostering a sense of ownership and empowerment in the process.*

*Your membership is a valuable step towards actively participating in the direction and decision-making of NCACCH. We welcome your involvement and look forward to working together to achieve our shared goals.*

***In addition to your voting rights at the Annual General Meeting (AGM), membership provides individuals with the ability to influence the organisation's direction. It assures members that their input is valued and taken into account in all pertinent decision-making processes. Members also can be nominated to become a Director.***

**Full  
Financial  
Members**

**200**

**Associate  
Financial  
Members**

**05**

To know more about Membership:

**[www.ncacch.org.au/membership](http://www.ncacch.org.au/membership)**





# Community Survey 2023

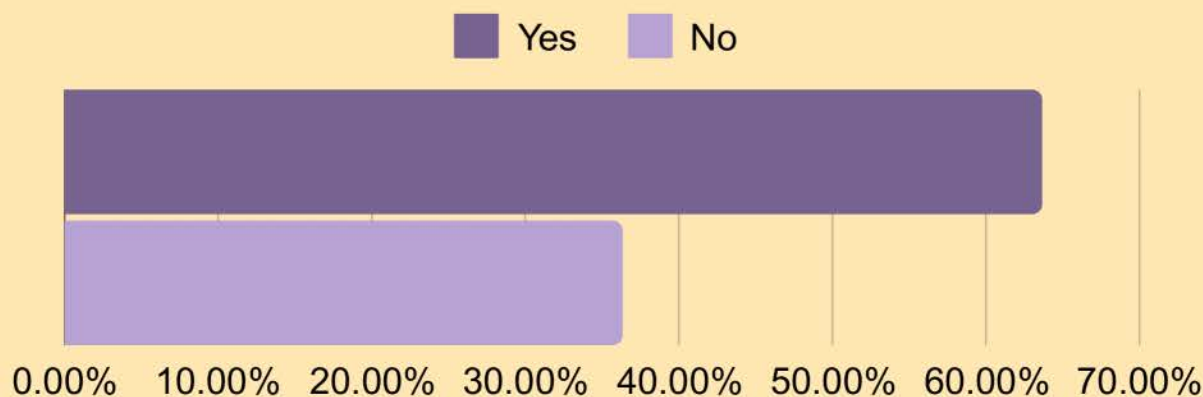
NCACCH Survey is conducted annually to gain valuable feedback in order to improve service provision to the Aboriginal and/or Torres Strait Islander community residing in the Sunshine Coast, Gympie and surrounding regions.

The 2023 NCACCH Community Survey collected responses from 446 participants to understand community demographics and health service usage.

- **Demographics:** Most respondents were aged 50-59, with a significant majority identifying as female (66.37%).
- **Household Size:** 79.82% lived in households of 1-4 people.
- **Health Service Access:** 61.43% accessed GP or Allied Health vouchers, and 63.66% completed a 715 Health Check in the past year.
- **Barriers:** Common barriers included financial issues (29.25%) and work commitments (35.61%).
- **Service Satisfaction:** Respondents generally rated NCACCH services positively.
- **Communication Preferences:** Text messages (63.87%) were the preferred method for receiving promotional material.

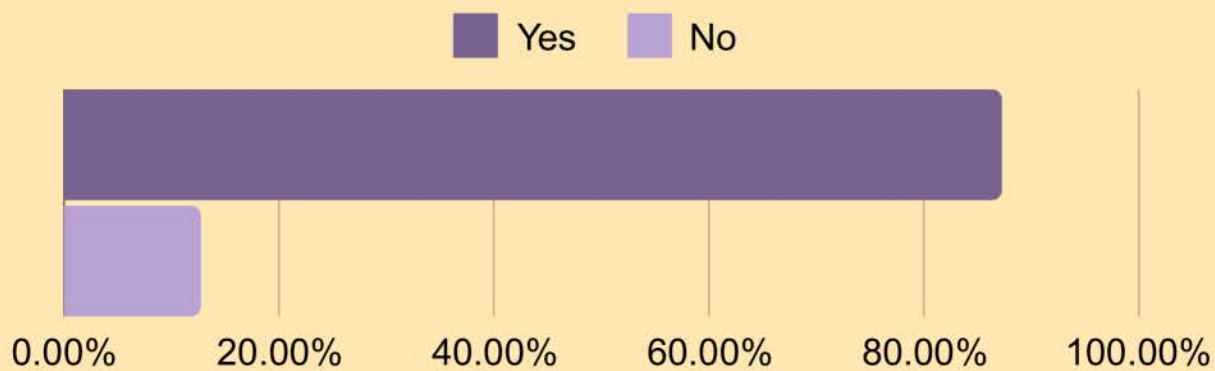
Overall, the survey highlighted key demographic insights and community needs, emphasising the importance of addressing barriers to health service access and enhancing communication strategies to better serve the community.

## Have you completed 715 Health Check in the past 12 months?

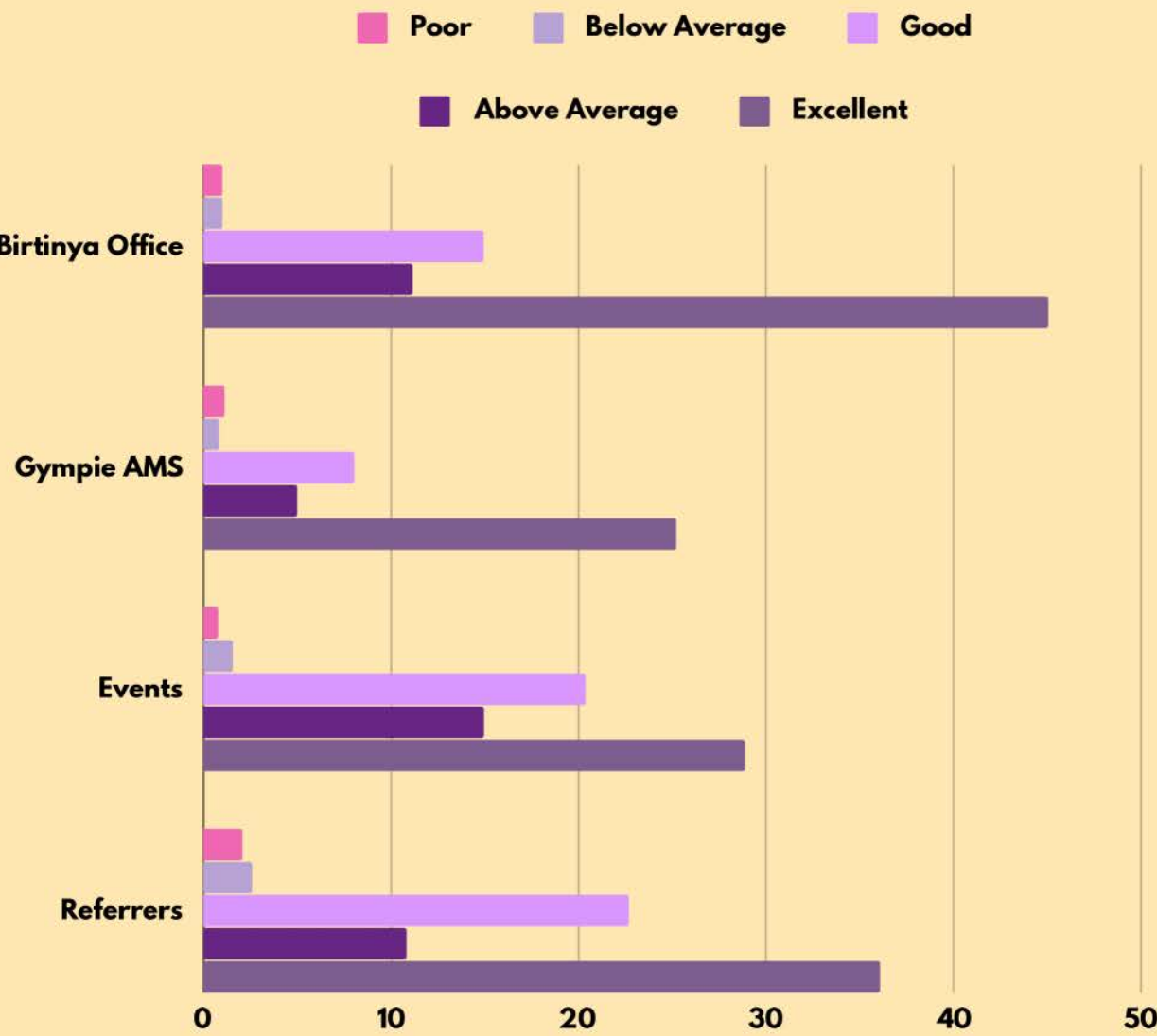




Have you registered for Closing the Gap (CTP)?



How would you rate the service you received from NCACCH in the following areas?





# WPHCD 2023

## Well Persons Health Check Day

On Saturday, 7th October 2023, more than **500 Aboriginal and Torres Strait Islander community** members gathered at the annual NCACCH Well Persons Health Check Day. This year, the event was held during Mental Health Week, with a focus on promoting mental wellbeing through cultural connections. Recognizing that 31% of Aboriginal and Torres Strait Islander people experience high psychological stress, the event emphasized the importance of community, culture, and holistic health in improving social and emotional wellbeing.



The theme for this year's event, "**NEW BEGINNINGS**" symbolized hope for the future, highlighting the ongoing journey toward better health outcomes and bridging the life expectancy gap of 8.6 years for men and 7.8 years for women compared to non-Indigenous Australians.

**235** | 133 - Adults  
102 - Children *Health Checks*



The day featured a variety of health-focused activities, including **235 health checks, with 133 for adults and 102 for children**, as well as workshops on chronic disease prevention, smoking cessation, and mental health. Attendees enjoyed cultural performances from the Gubbi Gubbi Dance Troupe and Katu Zoreu Torres Strait Islander dancers, along with live music by Mason Hope and Andrea Kirwin. The event was expertly hosted by comedian Sean Choolburra, who brought humour and cultural insights to the day.

A strong family-friendly atmosphere featured free entertainment, including an inflatable obstacle course, jumping castle, and face painting. The Youth Tent offered creative activities for children, such as jewellery making and cultural yarnning.





## 20 Health Agencies

Additionally, **20 health-related agencies participated**, offering information and resources on services available in the Sunshine Coast, Gympie, & surrounding areas. The event not only connected the community to vital health services but also fostered collaboration among the attending agencies.



**500+** Aboriginal and Torres Strait Islander

*community*

**Attendees**

Well Persons Health Check Day 2023 was a smoke-free, alcohol-free, drug-free, and vape-free event, ensuring a safe, positive environment for all.





# CTG Day

Closing The Gap Day is a key annual community event that brings attention to the ongoing efforts to address health disparities and promote equity in healthcare, particularly for Aboriginal and/or Torres Strait Islander communities. The day serves as a powerful reminder of the systemic barriers that hinder access to quality healthcare and the importance of continued advocacy to overcome these challenges.

This year, the event was honoured by Aunty Deb Bennett, who delivered an inspiring speech reflecting on the significance of Closing the Gap Day. Aunty Deb highlighted the 4 Key Priority Areas and 17 targets set to bridge the health gap between Indigenous and non-Indigenous Australians. She emphasized the importance of sustained efforts and collective action in making meaningful progress toward these targets.



## Activities

- Workshops and Seminars conducted to host educational sessions on health topics relevant to Indigenous populations.
- Provide free health screenings and resources to the community.

To know more about Closing the Gap Report:  
[www.pc.gov.au/closing-the-gap-data/dashboard](http://www.pc.gov.au/closing-the-gap-data/dashboard)



# Youth Day

On Saturday, May 11th, NCACCH hosted an incredible Youth Day at Venue 114, bringing together the community for a day filled with performances, cultural experiences, and engaging activities aimed at empowering our young people. The event was a great success, thanks to the amazing support from the community and partners, including Queensland Aboriginal and Islander Health Council and Deadly Choices.

The day featured performances by talented young artists like LIL MASE and his team, and attendees had the opportunity to engage with various partner stalls, including Youturn, Teens Take Control Inc., Autistic And Deadly, headspace, IFYS, QPS, 4ZZZ, and University of the Sunshine Coast. One of the highlights was a virtual songlines experience along with cultural demonstrations by Lyndon and other artists.

”

A huge thank you goes out to the NCACCH team, our volunteers, and all the stallholders who made the day memorable for everyone, ensuring that the youth had a fantastic time with great food, entertainment, and activities. We look forward to hosting many more events like this, dedicated to benefiting and uplifting our youth.







“



One of the standout highlights of the day was the **Virtual Songlines** experience, which offered a life-changing 3D view of Kabi Kabi country.

This immersive experience allowed attendees to gain a deeper understanding of how the land was cared for by our Elders, offering a profound connection to country and culture.





# SEWB *Launch Day*



## Social and Emotional Wellbeing (SEWB) Program Launch Day

On 22nd April 2024, we proudly launched our Social and Emotional Wellbeing (SEWB) Program at the Gympie Family Hub with great success! The day was a wonderful celebration as we introduced the Yangalidjin ('Make Well') Program, designed to provide comprehensive social and emotional wellbeing support to our mob and the wider community.

We were thrilled to see so many community members come out to celebrate this important milestone with us. The SEWB Program represents a significant step forward in our commitment to fostering wellbeing, healing, and resilience among Aboriginal and/or Torres Strait Islander people in the region.

“

For more information about the program, or to connect with our SEWB team, please call our office at **07 5346 9800** and ask to speak with one of our SEWB Officers.





# Health Equity

The Sunshine Coast Aboriginal and Torres Strait Islander Health Equity Strategy 2022-2031 focuses on long term changes that address structural and systemic inequities to enable the provision of culturally safe and accessible healthcare.

The Strategy and the Implementation Plan are co-designed, co-owned and co-implemented between North Coast Aboriginal Corporation for Community Health (NCACCH), Sunshine Coast Hospital and Health Service (SCHHS), Country to Coast Qld (PHN) and its partners to ensure we continue to meet our agreed strategies to better support the Aboriginal and Torres Strait Islander community.

## Objectives

**Eliminate racial discrimination**

**Co-design and partnerships**

**Culturally diverse and confident workforce**

**Culturally safe and responsive healthcare**

**Increase access to healthcare**

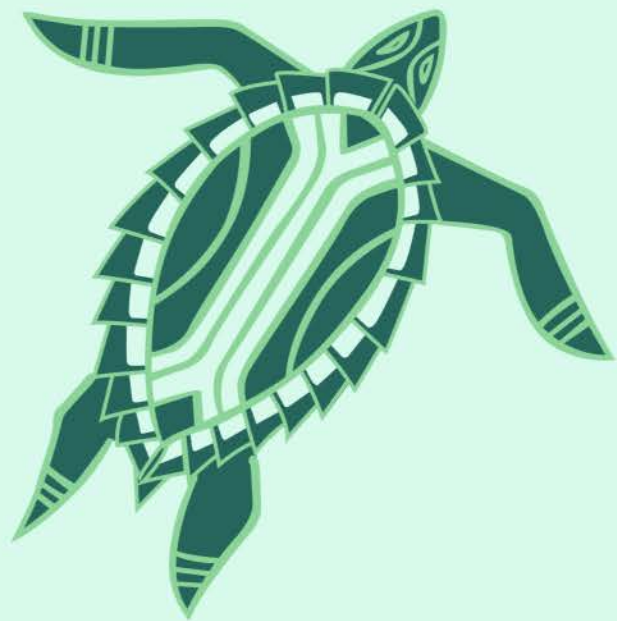
**Health parity**

Sunshine Coast Hospital and Health Service continues to collaborate with our Aboriginal and Torres Strait Islander Community Controlled Health Organisation (A&TSICCHO), North Coast Aboriginal Corporation for Community Health (NCACCH) and Country to Coast QLD (Primary Health Network (PHN)). Together we have collaborated on several community initiatives including Nyina Budja Health Equity Expo, Well Persons Health Check Day (WPHCD) and the Nyina Budja Health Equity Conference held in May 2024. The three organisations also meet bi-monthly at the Aboriginal and Torres Strait Islander Health Equity Forum which also includes a community Elder.



NCACCH Chair Kerry Staines and CEO Sharelle Eggmolesse on the left. Sunshine Coast Hospital and Health Services Board Chair Dr David Rowlands OAM and Chief Executive Dr Peter Gillies on the right.





# *About* **NGACCH** *Services*



# NCACCH

## Dashboard



NCACCH  
SERVICE REGION

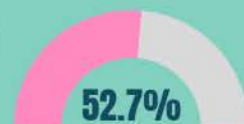
**14654**  
Total registered  
clients

Gender not  
stated 65

**6690**



**7498**



We had more than **200%**  
increase in our client base.  
In 2011, we had 3955 clients

**13563**  
Brokerage clients

**1091**  
AMS clients

**0-39 Age**  
**9239** (71%)

### NCACCH STAFF PROFILE

**28**  
Full Time staff



**11**  
Non-Indigenous

Episodes of care  
**21074**

**27**  
Aboriginal and/or Torres  
Strait Islander



Client Contacts  
**19058**

Brokerage  
**11478**  
Clinic Visits

HAPEE CLINICS  
**317**

CDMP contacts  
**2499**

Mums & Bubs  
**212**

TIS Contacts  
**1127**

AMS Contacts  
**5870**



**30** different community  
events & activities

**96%** said they would like to attend an  
Aboriginal Medical Service if it was  
located in their service region.

\* 2022 Community survey



# Gympie Aboriginal Medical Service

This year, the Gympie Aboriginal Medical Service (AMS) continued to experience significant growth, with a notable increase in patient numbers. Despite challenges, including necessary staffing changes, the team at AMS has remained committed to supporting clients in managing their health and ensuring quality care.



## DASHBOARD

472	CLIENTS	619
Male		Female
3526	Episodes of care	
715 Health checks	332	
Client Contacts	6995	

We were pleased to welcome Dr. Richard Pridham to the team, joining at 0.8 FTE capacity and also serving as a Senior Medical Officer (SMO). Dr. Pridham has been a great addition, further strengthening the clinical team.

Together with the ongoing dedication of our existing staff, AMS remains a vital resource for the Gympie community and surrounding regions, providing consistent and culturally appropriate care to Aboriginal and/or Torres Strait Islander people in the region.





# Chronic Disease Management Program



Chronic Disease Management Program (CDMP) continues to support Aboriginal and Torres Strait Islander clients living with a chronic disease. The program provides a culturally responsive service and assists clients to manage their medical care to improve their health and quality of life.

**THE PROGRAM CONTINUES TO MAINTAIN A STRONG FOCUS ON SELF-MANAGEMENT AND PROVIDING SUPPORT COORDINATION TO CLIENTS.**

One notable example this year was a check-in with a client currently undergoing chemotherapy treatment for metastatic pancreatic cancer at the Sunshine Coast University Hospital.

The client shared positive news that her tumours in the lung and pancreas have responded well to the treatment, showing a reduction in size. With six treatment sessions remaining, she remains cautiously optimistic and is in discussions with her surgeon about the possibility of future surgery. She is grateful for the support of her family, particularly as they accompany her to appointments, including one scheduled for the following day.

Our team reassured the client that the CDMP is available to assist with medical appointments and provide additional support whenever needed. She expressed appreciation for the check-in and the ongoing care provided by the program.

Additionally, during this year's Well Persons Health Check Day (WPHCD), the CDMP team actively engaged with the community through health promotion activities and health assessments. The event led to several new referrals into the program, further expanding our reach and ensuring that more community members receive the care and support they need for managing chronic conditions.

This interaction reflects the CDMP's commitment to ensuring that clients not only receive medical care but also feel supported and connected throughout their treatment journey.

## CDMP DATA

**116** **280**  
Active CLIENTS Self-managing  
Episodes of care  
**1140**



# Child & Maternal Health

Nanna Bill's Mum's & Bub's Program has been a cornerstone of NCACCH's support for Aboriginal and Torres Strait Islander mothers and families since its inception in 2007.

In **2023**, the program was temporarily placed on hold as we undertook a comprehensive review to ensure it continues to meet the needs of our community. This review allowed us to make significant improvements to enhance the services offered.

We are excited to announce that Nanna Bill's Mum's & Bub's Program returned in October **2024**!



The program remains dedicated to providing women and their families with confidential, culturally appropriate support throughout pregnancy and until the baby's first birthday.

As part of this relaunch, we held an information session at the Gympie Family Hub on Thursday 27th June and Nambour Community Centre on 19th July where pregnant women and families with young ones were invited to share their thoughts and have their say. The session ran from 11am to 1pm, with lunch provided.

We are eager to resume this vital service and provide much-needed support to our community once again.

## Hearing Clinics

NCACCH has continued its partnership with **Hearing Australia** to deliver **Ear Health screening services** to Aboriginal and/or Torres Strait Islander children in our region and subcontracted school audiology screening to **Hear & Say** through **CheckUP** funding.

The Hearing Assessment Program – Early Ears (HAPEE) is run by Hearing Australia. The HAPEE prioritises Aboriginal and Torres Strait Islander children in the years before school and has a national focus across all Australia.

The logo for BIRTINYA HAPEE CLINICS features two cartoon kangaroos, one on the left and one on the right, both wearing blue shirts. Between them is the text 'BIRTINYA HAPEE CLINICS' in large, bold, blue letters with a white outline. Above the text are the logos for 'Hearing Australia' and 'NCACCH North Coast Aboriginal Corporation for Community Health'. Below the kangaroos, a blue banner contains the text: 'The Program provides FREE hearing checks to Aboriginal and Torres Strait Islander children aged 0-6 years who do not yet attend school.'

108

**HAPEE Clinic Attendees**

317

**Hear & Say Audiology Screening**



# COVID-19 Update

With the support of **NACCHO's COVID-19 transition funding**, NCACCH has been able to conduct **several important activities to support our community through the ongoing recovery from the pandemic**. We facilitated multiple RAT distribution sessions across all NCACCH sites, ensuring access to testing for our mob.

As part of the COVID-19 transition, **NCACCH has integrated pandemic care into regular workflows while ensuring ongoing preparedness**. Key infection control and monitoring measures were implemented, alongside pandemic preparedness planning to enable rapid responses to future COVID-19 waves or variants.

We focused on **education and community engagement to promote vaccination, testing, and treatment uptake, addressing vaccine hesitancy through adapted communication materials, workforce immunization training, and community engagement activities**. Additionally, we provided transport support to ensure access to vaccination and care, and conducted advertisement and promotion to boost awareness.

We also delivered catch-up care services, focusing on the long-term impacts of COVID-19 across primary healthcare areas. This included chronic disease management, health screenings (715s), mental health support, and follow-up on overdue recalls, ensuring continuity of care for our community.

Looking ahead, our Clinical Team has developed strategic plans to smoothly transition into post-pandemic care. These strategies are **incorporated into our regular clinical activities, and we are in active communication with our Service Providers across the NCACCH network through our Brokerage system**.

## Mental Health



NCACCH acknowledges how the recent referendum can profoundly impact Aboriginal and/or Torres Strait Islander mental health and wellbeing, rights, representation, and reconciliation efforts. As a result, NCACCH offered several initiatives to support the Mental Health (MH) and Social and Emotional Wellbeing (SEWB) of Aboriginal and/or Torres Strait Islander people before, during, and after the Referendum.

- 1. Brokering Mental Health Services:** NCACCH facilitated access to mental health services for individuals impacted during the Referendum period through our brokerage model. We saw a noticeable increase in referrals for MH and SEWB services, underscoring the critical role of our support during this time.
- 2. Building Community Connectedness through WPHCD:** On 7 October 2023, we held the Well Persons Health Check Day (WPHCD), which played a key role in promoting community connectedness and mental wellbeing. Mental Health Care Plans were provided to clients needing additional support, ensuring culturally appropriate care from our Aboriginal Medical Service (AMS).
- 3. Culturally Appropriate Wellbeing Activities for Staff:** As part of our commitment to staff wellbeing, we organized a Staff Wellbeing Day, starting with a smoking ceremony to cleanse negative impacts. This was followed by visits to local sacred sites, offering a full day focused on connecting mind, body, and soul to culture and country. This provided crucial cultural grounding and support for staff during this challenging time.



# Elder Care Support



*Burangami*  
we listened.....

Creating Pathways to  
Elder Care Support

**Burangami (ECS) program is an Aged  
Care connector service not an Aged  
Care Service Provider.**



The Burangami Elder Care Support (ECS) Program is designed to increase access to Aged Care Services for Aboriginal and/or Torres Strait Islander Elders aged 49 years and over in the Sunshine Coast, Gympie, and Noosa regions.

Burangami program focuses on connecting you with aged care services by providing:

**Education and Awareness:** We inform Elders about available aged care services.

**Support in My Aged Care Registration:**

- a) We offer **advocacy and liaison services** during the screening process for My Aged Care registration.
- b) We provide **community awareness sessions** on how to register for the My Aged Care program.
- c) We **train and support** you in navigating conversations with assessors and during phone calls with MyGov staff.
- d) We offer **education sessions** for carers, spouses, and partners to help understand the aged care system.
- e) We **listen to your concerns or challenges**, recognizing the barriers in navigating the Aged Care System.

## Rheumatic Heart Disease & Acute Rheumatic Fever

NCACCH has been actively addressing the critical issue of Rheumatic Heart Disease (RHD) and Acute Rheumatic fever within our community. With plans to expand our efforts, our specialised team of clinicians and project officers will be working closely with the Sunshine Coast Hospital and health Service, General Practices, NCACCH Aboriginal Medical Service and our community.

This program aims to provide early detection, prevention, and management of RHD and ARF, ensuring that those affected receive timely and culturally appropriate care.



**RHD Team**





# FASD

program is supported by



This year, we focused on raising awareness about Fetal Alcohol Spectrum Disorder (FASD) through the design and distribution of brochures, flyers, posters, and other promotional materials. These resources were specifically targeted toward pregnant women, helping to assess their current knowledge about FASD and providing crucial information on the impacts of alcohol during pregnancy.

Our efforts included radio campaigns to promote FASD awareness and participation at major community events such as the Well Persons Health Check Day (WPHCD), Murri Carnival, and Murri Christmas.

These events provided opportunities to engage directly with the community, raising awareness about FASD and its long-term effects.



## IHSPS



COME HAVE A YARN WITH ASH  
ABOUT YOUR MEDICINES

The Indigenous Health Services Pharmacy Support (IHSPS) program continues to play a crucial role in supporting the health and wellbeing of the community. Ashlee, our dedicated pharmacist, who is funded through IHSPS, provides valuable pharmacy education to the community, clients, and staff. She is actively involved in conducting Home Medicines Reviews (HMRs), ensuring clinical safety protocols, and assisting with Clinical Governance documents related to medicines. She also keeps everyone informed of the latest updates on changes in drug dispensing regulations.

Ashley is passionate about integrating her pharmacy services with our existing Brokerage model, Chronic Disease Management, and Aboriginal Medical Service (AMS) to enhance support for clients. Through the IHSPS program, clients also have access to pharmacy aids, transport support, and any additional pharmacy education they or the staff require.



Ashley's expertise and proactive approach ensure that NACCHO continues to provide high-quality, comprehensive pharmacy support to the community.





# MOBile Pod Survey

The Mob Pod is a mobile health van that will bring important **culturally appropriate health services** straight to our Aboriginal and Torres Strait Islander communities in areas outside of Gympie and Noosa regions such as Cooloola Cove, Tin Can Bay, Rainbow Beach, Kilkivan, Imbil Glenwood, Cooroy, Pomona and surrounds.

**We'd love to have a yarn with you about the vehicle design, services to be provided and hear your ideas on any features and services you'd like to see included.**

Have your say!



It will offer care both in-person and through telehealth, making it easier for mob in rural areas to get the healthcare they need, close to home.

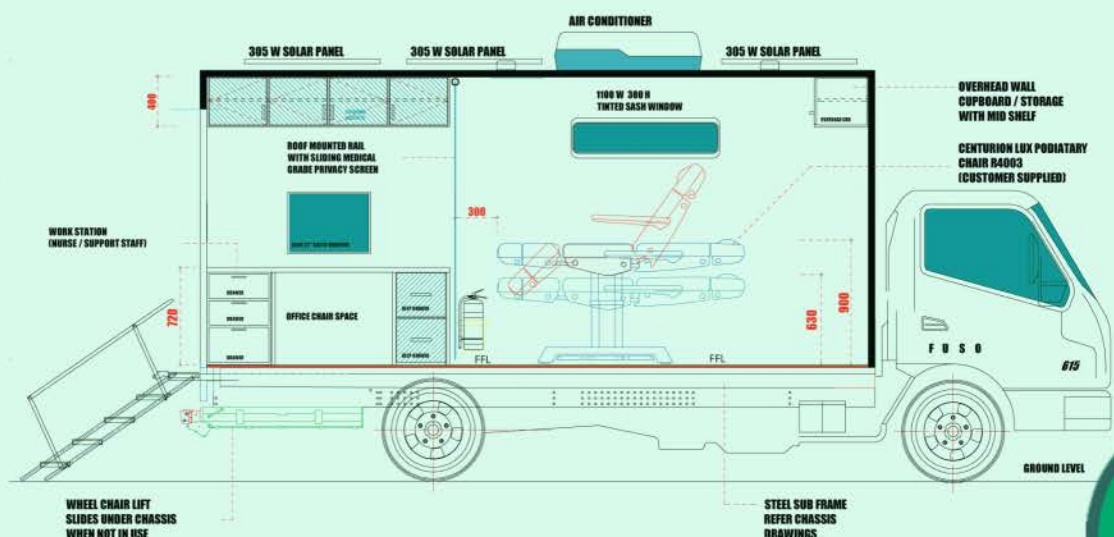
**Your Voice Matters**

The Mob Pod initiative seeks to trial a new model of healthcare service delivery for our community by launching a fully equipped, digitally capable mobile health service that extends beyond traditional care models. Prioritizing community engagement, we will collaboratively design services that meet the specific needs and preferences of our local population.

The Mob Pod will deliver critical health services, including mental health support, nurse-led clinics, telehealth consultations, and specialized care, directly to regional and remote communities outside the Gympie and Noosa regions.

The vehicle is in the process of being fitted out and is expected to arrive before the end of 2024.

**CAD designs have been made available for input from community.**











# No Durri *for This Murri*

## Tackling Indigenous Smoking (TIS) Program Update

In the past year, the No Durri for This Murri program faced a significant challenge when it no longer received funding from the Commonwealth Program. The tender process for the South East and South West regions of Queensland left us questioning whether it was possible to continue delivering this crucial service. However, through a strong **partnership with IUIH - Deadly Choices**, we were able to retain the same number of positions and resources that had been provided previously.

Thanks to this collaboration, the No Durri for This Murri program now delivers the Deadly Choices anti-tobacco program for both Junior and Senior participants. The program runs over six weeks and has been successfully launched across multiple schools in Gympie, Noosa, and the Sunshine Coast.



This initiative continues to empower young people with knowledge and tools to make healthy choices and reduce smoking rates in our community. We are excited to see the positive impact this partnership will continue to have on tackling Indigenous smoking in the region.



# Key activities

**Men's Groups**

**Women's Groups**

**Child Health Activities**

**Health Promotion Campaigns**

**School-based Programs**

**No Durri For This Murri**

**(TIS) Program**



**No Durri**  
*for This Murri*

on

**91.9 Sea FM**

On May 31st, 2024, Kylie and Kyla, NCACCH's Community Engagement Officers, were interviewed by Foz and Brooke on 91.9 Sea FM to raise awareness about World No Tobacco Day.

During the interview, they highlighted the serious health risks associated with smoking, particularly the alarming trend of how young people are starting to smoke and how this is affecting communities.



To listen  
scan the QR code



# TIS Launch

In December 2023, we proudly celebrated the launch of our Tackling Indigenous Smoking (TIS) Program in **partnership with Deadly Choices**. The event was a great success, with the community gathering in support despite the heat. We extend special thanks to Lyndon Davis and his dance troupe for the Welcome to Country, which set a meaningful tone for the morning.



**362** Total surveys  
**199** Female | **163** Male

Deadly Choices



NCACCH North Coast Aboriginal Corporation for Community Health

## TACKLING INDIGENOUS SMOKING LAUNCH & COMMUNITY DAY

THURSDAY, 14 DECEMBER | 10AM-1PM |  
 THE NAMBOUR CRUSHERS, 22 CRUSHER PARK DR, NAMBOUR

Join us for the launch of the Deadly Choices Tackling Indigenous Smoking program! It will be a deadly day with free food, activities for kids and plenty of giveaways. Plus, you'll get the chance to meet some of your favourite Deadly Choices Ambassadors!



No Durri for This Murri is a Deadly Choice! For more information about our Tackling Indigenous Smoking Program, visit In December 2023, we proudly celebrated the launch of our Tackling Indigenous Smoking (TIS) Program in partnership with Deadly Choices. The event was a great success, with the community gathering in support despite the heat. We extend special thanks to Lyndon Davis and his dance troupe for the Welcome to Country, which set a meaningful tone for the morning.

Visit <https://ncacch.org.au/our-services/smoking-cessation-2/> or call 07 5346 9800 to speak with one of our Community Engagement Officers.

### Junior and Senior Program participants

**164** Total surveys  
**90** Female | **74** Male





# Gympie Family Hub

The Gympie Family Hub has become a central space for holistic health services, earning the appreciation of the Gympie community for providing a welcoming and accessible location.

## NCACCH Organised Activities

- Women's Group Activities
- All Men's groups meet at the Hub prior to and after men's group as well as engage in social activities and events aligned to the Hub
- Regular meetings with community Elders and Traditional Custodians
- Murri Christmas Party
- Department of Health Site visit
- Department of Social Services Site visit
- TIS stalls
- Yangalidjin (Make Well) Program Launch
- FASD stalls
- Studio Art Trails and Art Gallery Event Preparation
- Meetings with education re; Deadly Choices
- AGM and Special General Meetings
- Hot Desking of NCACCH Staff

## Community Clinics

- Mental Health Clinic
- Eye Health Clinic
- Pharmacist Drop In Day – knowing your medication
- Social and Emotional Wellbeing Program (NCACCH)

## Community Groups

- Young Mums and Bubs
- Community Action Meetings
- NAIDOC Meetings
- School Delegate Meetings

## External Bookings

- Carers QLD (NDIS Support) Drop In
- Your Best Life – Occupational Therapy (Children's)





# Men's Group



The Men's Group continue to embark on enriching cultural experience, exploring and immersing themselves in the rich heritage of the southern Sunshine Coast and Gympie region.

**They have remarkable days filled with exploration and discovery as they visit various significant cultural sites, and yarn and connect.**

**275+**  
**Engagements**

**11 groups with approx  
20-25 men attending**

The Men's Group consists of enthusiastic participants who eagerly embrace the opportunity to learn and engage with the local culture. They catch up for a yarn, explore walking tracks and, do a bit of fishing - always exchanging stories, experiences, and laughs along the way.







# Womens Group



Each month, a planned activity brings the group together, offering opportunities to learn, engage, and share experiences. A shared lunch is provided for all attendees, further enhancing the sense of community and togetherness.

**250+**  
Engagements

11 groups with  
approx 10-12  
women attending



“

The Women's Group continues to be a vibrant and supportive space where Aboriginal and/or Torres Strait Islander women can form meaningful connections, build friendships, and share culture. Through regular gatherings, the group fosters a sense of belonging and community, providing a culturally safe environment for women to come together.



# Marketing & Communications

This year, our Marketing & Communications efforts expanded significantly, reaching the community through multiple channels. In addition to sending over **235,000 SMS** messages to inform community members about services and events, we broadened our outreach to include billboards, radio ads, mailouts, website updates, and regular social media updates.

Our social media presence saw impressive growth, with a reach of **92,100+ people**—a 267% increase compared to last year. We now have **4,500 followers on Facebook**, and our content interactions have more than doubled, with 8,200 interactions, a 108% increase over the previous year.

These expanded efforts demonstrate our commitment to keeping the community informed and engaged across a variety of platforms, ensuring that everyone has access to important information about our services and activities.

In the last 12 months we have sent **235,000 SMS** messages to Community informing about services and community activities.



## Reach



**92,100+**

**267%** ↑

## Content Interactions



**8,200**

**108%** ↑

## Followers



**4,500**

## Link Clicks



**1,700**

**790%** ↑





The Board and Staff Wellbeing Day this year **was a significant and important event, also as a Cultural Day**. The day started with smoking ceremony and was dedicated to improving the social and emotional wellbeing of Board, staff, fostering stronger bonds, and reinforcing the cultural connections within the organisation.

Throughout the day, Board and staff participated in various activities that promoted relaxation, cultural grounding, and team bonding. The event played a vital role in strengthening relationships and enhancing the sense of community within the workplace, ensuring that Board and staff feel supported and connected on a deeper cultural level.





## Staff cultural day

The focus on wellbeing and cultural connection has been an instrumental tool in creating a positive and resilient working environment, where staff feel empowered and united.



## HIV Awareness week



## Celebrating 20 Years of Dedication

This year, we proudly acknowledge the incredible milestones achieved by Aunty Lyndelle Beezley and Sharelle Eggmolesse, both celebrating 20 years of service to our community.

In January 2024, Aunty Lyndelle, currently serving as Senior Administration Officer, marked her 20th anniversary with NCACCH. Known for her wisdom and dedication, Aunty Lyndelle shared a powerful piece of advice:

“

**Maintain a positive attitude and never hesitate to ask questions, that will always assist in our own growth.**

”

She also offered a heartfelt quote that speaks to her deep sense of purpose:

**“We must always want to make life better for others, not bitter.”**

In February 2024, we celebrated Sharelle Eggmolesse, who also completed 20 years with NCACCH and is currently our CEO. Sharelle’s journey reflects her unwavering commitment to giving back to the community. As she shared:

“

**I am here to serve and advocate for our community. I am honoured to be in a position where I can listen, learn and act to make a true difference for our mob.**

”

Sharelle also emphasized the importance of staying true to one's intentions, even when challenges arise, and remaining open to new experiences that align with the values and vision of the organisation.

***Wishing Aunty Lyndelle and Sharelle heartfelt congratulations on two decades of dedication! Your passion and commitment continue to inspire us all.***

**— Board and Staff**



# Brokerage Services

Brokerage services is also known as - The Indigenous Health Access Scheme (IHAS). This service provides a referral pathway for broad range of practitioners of their choice.

- Collaboration with affiliated practices
- Support in cultural safety
- Closing The Gap - Pharmaceuticals Benefit Scheme
- NCACCH IHAS database support

This year, NCACCH Brokerage Services processed a total of **2,058 referrals**, reflecting a 27% decrease compared to the previous year. Despite the reduction in referrals, the service continued to play a critical role in connecting community members with essential healthcare services.

## Number of visits across key services :

**Dental: 1,160 visits**    **Mental Health: 575 visits**

**Podiatry: 217 visits**    **Physiotherapy: 350 visits**

**Nutrition: 49 visits**    **GP Visits: 13,900 visits**



Christmas workshop

In addition, the brokerage network was supported by 59 Community Referrers, ensuring that clients were connected to the appropriate services based on their needs.

NCACCH remains committed to providing accessible healthcare services through our brokerage model, working to ensure the community continues to benefit from a wide range of medical and allied health services.



715 winning artist

Nikita Fitzpatrick



# Brokerage Snapshot

**2058**  
Referrals

**27.6%**

Less than  
last year **2716**

Chronic Disease  
Allied Health  
& Specialists

**6251**

**6911**

## Visits

Podiatry

**217**

Nutrition

**49**

Mental Health

**575**

Dental

**1160**

GP Visits

**13900**

Physiotherapy

**350**

**255** General Practitioners



**19%**  
drop in  
GPs this  
FY 23-24



**35**  
General  
Practices



Last year  
this stat  
was **44**

**13900** GP visits

**33.4%**  
A big increase  
in GP visits  
10419 \*2022

**201** Allied  
Health  
Providers  
Last year  
202 AHPs

03 REFERRAL WORKSHOPS

**131** <sup>96</sup>  
Last year  
Specialists

**2085** New Clients  
joined the  
service  
**69%** Increase

59 COMMUNITY REFERRERS

This year has witnessed concerning overall progress, marked by a significant decline in the willingness of Health Providers to offer bulk billing services. The evident aftermath of post-COVID changes and financial pressures have contributed to a particularly challenging landscape for **BROKERAGE SERVICES**.



# Quality & Compliance



This year, **Taylor Moxham** joined NCACCH as the **Coordinator - Quality and Compliance** and has been instrumental in advancing our quality management processes. Taylor led the successful onboarding of all staff into LogiQC, our new Quality Management System, and has championed this initiative across the organisation.

Taylor has also proactively taken the lead on managing the Risk, Complaint, and Feedback Registers, ensuring that these critical areas are well-organised and closely monitored. As a result, staff are increasingly using LogiQC as their go-to platform for accessing policies, procedures, reference documents, and for lodging risks, complaints, feedback, and incidents.

Taylor's leadership has significantly enhanced our quality and compliance framework, ensuring that NCACCH continues to maintain high standards across all areas of operation.

We extend our heartfelt gratitude to everyone who took the time to delve into NCACCH 23-24 annual report. We appreciate the vital support from our funding bodies, Elders, dedication from our staff, and trust from our clients.

A special thanks to all our Aboriginal and Torres Strait Islander community members—the essence of NCACCH. Your resilience fuels our commitment to Closing the Gap.

As we move into the 24-25 year, we aim to create positive change and enhance community well-being. Your continued support ensures our collective success. Thank you for being integral to our journey towards a healthier future.





# Finance Position

## THE NORTH COAST ABORIGINAL CORPORATION FOR COMMUNITY HEALTH Statement of Financial Position As at 30 June 2024

	2024 \$	2023 \$
<b>ASSETS</b>		
<b>CURRENT ASSETS</b>		
Cash and cash equivalents	1,647,749	1,176,893
Trade and other receivables	486,898	2,616
Other assets	31,209	15,046
<b>TOTAL CURRENT ASSETS</b>	<b>2,165,856</b>	<b>1,194,555</b>
<b>NON-CURRENT ASSETS</b>		
Other assets	19,250	-
Property, plant and equipment	832,930	914,217
Artwork	5,000	5,000
Right-of-use assets	736,925	981,803
<b>TOTAL NON-CURRENT ASSETS</b>	<b>1,594,105</b>	<b>1,901,020</b>
<b>TOTAL ASSETS</b>	<b>3,759,961</b>	<b>3,095,575</b>
<b>LIABILITIES</b>		
<b>CURRENT LIABILITIES</b>		
Trade and other payables	332,084	362,200
Unexpended funding	263,814	102,700
Lease liabilities	333,653	303,116
Provisions for employee benefits	200,808	234,125
<b>TOTAL CURRENT LIABILITIES</b>	<b>1,130,359</b>	<b>1,002,141</b>
<b>NON-CURRENT LIABILITIES</b>		
Lease liabilities	607,204	874,181
Provisions for employee benefits	22,251	50,875
<b>TOTAL NON-CURRENT LIABILITIES</b>	<b>629,455</b>	<b>925,056</b>
<b>TOTAL LIABILITIES</b>	<b>1,759,814</b>	<b>1,927,197</b>
<b>NET ASSETS</b>	<b>2,000,147</b>	<b>1,168,378</b>
<b>EQUITY</b>		
Retained Surpluses	2,000,147	1,168,378
<b>TOTAL EQUITY</b>	<b>2,000,147</b>	<b>1,168,378</b>

## Statement of Changes in Equity For the year ended 30 June 2024

	Retained Surpluses \$	Total equity \$
Balance at 1 July 2022	1,385,683	1,385,683
Total comprehensive income for the period		
Total comprehensive income for the year	(217,305)	(217,305)
Balance at 30 June 2023	1,168,378	1,168,378
Total comprehensive income for the period		
Total comprehensive income for the year	831,769	831,769
Balance at 30 June 2024	2,000,147	2,000,147





This year's annual report proudly features artwork by local Traditional Custodian, Lyndon Davis. He is a renowned local artist whose work reflects the deep connection to culture, country, and community.

Lyndon's artwork captures the spirit of our people and the importance of cultural continuity.

His creative vision has been integral to many NCACCH events, including Welcome to Country ceremonies, numerous art pieces and cultural activities throughout the year.

## Painting Overview:

Depicting NCACCH's 20-year story, this painting brings across important components from NCACCH's 10-year artwork to continue portraying its successes, challenges and expansion of health service delivery. With NCACCH in the middle, the outer groups represent important community and provider networks across the service region. Equally as important, the family tree is used as a metaphor to highlight the value of strong generational connections. The lines within the painting are concentric - meaning the thickness indicates the importance of the symbol to both NCACCH and the community.

The different animals and plants symbolize NCACCH's diverse geographical footprint and demonstrate the reach of locations the Board of Directors represent. These include:

**Tin Can Bay:** Dugong, Mudcrab, Turtle and Mangroves

**Mary Valley:** Crocodile

**Gympie:** Dingo (Tuchakoi), Frillneck, Lungfish, Yabby, Long-neck Turtle

**Hinterland:** Bunya Tree, Mountains, Platypus

**Nambour:** Paperbark Tree, Platypus, Turtle, Fish (gathering place)

**Maroochydore:** Black Swan, Crab, Fish, Stingray, mullet

**Mudjimba:** Berries

**Caloundra:** Mullet, Sea Eagle, Beach Tree

In addition, as the whale is seen as a significant feature of the Coast, it depicts NCACCH evolution over the past 20 years;

- Like the whales, NCACCH has emerged itself back into the local area as a formidable landmark
- Like the whales, NCACCH numbers have grown significantly over the years
- Like the whales, NCACCH could be seen as being part of the totemic system of the local area





**NCACCH**  
North Coast Aboriginal Corporation  
for Community Health

### **NCACCH HEAD OFFICE**

**8/8 Innovation Parkway**

**Birtinya QLD 4575**

**Phone: 07 5346 9800**

### **ABORIGINAL MEDICAL SERVICE**

**31 Excelsior Road**

**Gympie QLD 4570**

**Phone: 07 5329 5872**

### **GYMPIE FAMILY HUB**

**2 O' Connell Street**

**Gympie QLD 4570**

[www.ncacch.org.au](http://www.ncacch.org.au)

[www.facebook.com/ncacch](https://www.facebook.com/ncacch)

