

Message Stick



17/03/2025


Update
#02

Maroochydore
Aboriginal Medical Service



Kerry Staines
Chair



Sharelle Eggmolesse
CEO



NCACCH

North Coast Aboriginal Corporation
for Community Health

*"NCACCH acknowledges the
Traditional Custodians of the
land and pays respect to Elders;
past, present and emerging"*

"Your Pathway to Better Health"

Maroochydore Aboriginal Medical Service

Clinic Update

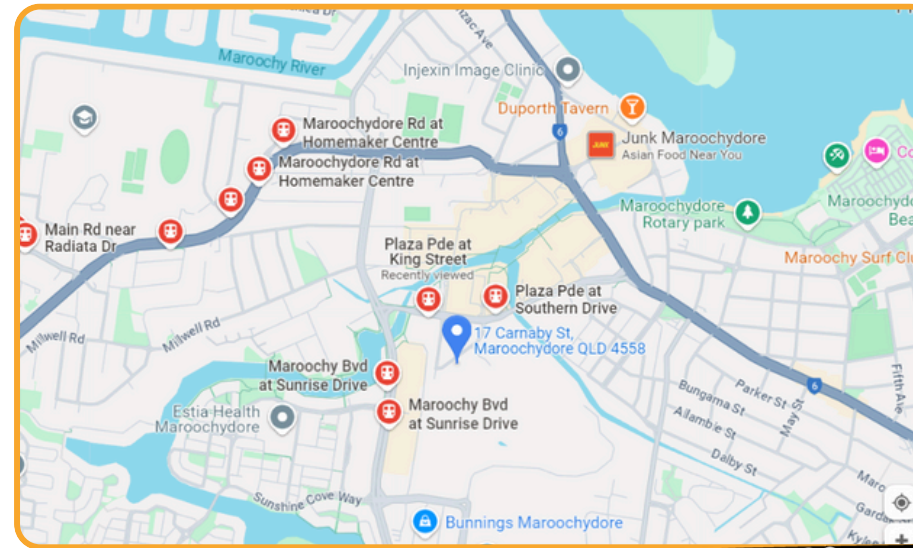
Exciting news - the clinic fit out and new head office at 17 Carnaby St, Maroochydore (just off the Plaza Pde) is moving along at a good pace. Great to see framing completed to get a good sense of the space. All going well, the AMS should be completed 09 May and the Head Office should be completed 16 May, with services commencing early June 2025. Watch this space for the community open day!

Check out the videos and links below to keep track of the fit-out progress.

With all Elder and Community consultations now completed, the NCACCH project team will take into consideration all feedback received and include where possible. If you couldn't make it to one of the sessions, don't worry, you can still view the designs, colours and available services on our webpage. See page 6 for more details.

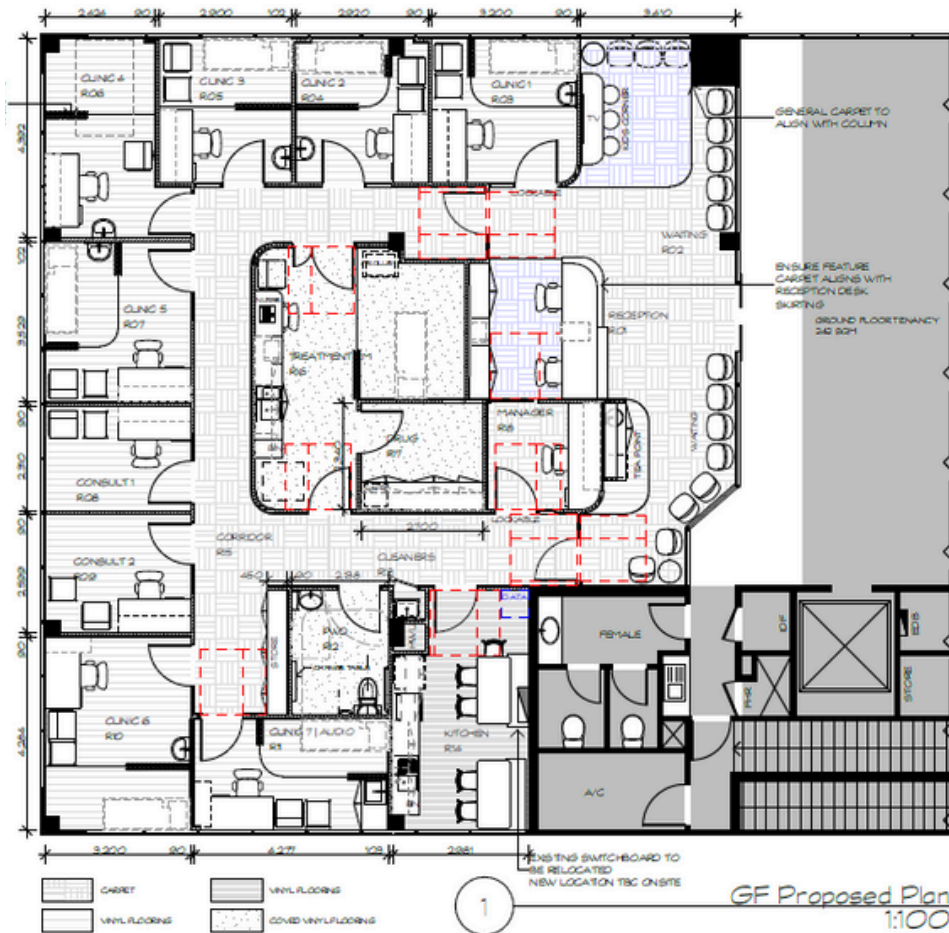
We will commence our official marketing campaign shortly and are looking to recruit the last few team members to deliver the highest quality care from the Sunshine Coast's first Aboriginal Medical Service. We encourage all expressions of interest from GP's, Nurses, Medical Receptionists, Allied Health and Social Health clinicians.

If you or someone you know wants to work for a deadly and progressive workplace send your resume and cover letter to cristee@ncacch.org.au We're also very keen to hear from Mob who may be currently studying in any of the health disciplines and would like to discuss placement opportunities.



Project Manager Update

Maroochydore AMS Fit-Out Update



Click on the pictures where you will be taken to our website so you can view the detailed fit-out plans, sample colours and services being offered.

There is also the opportunity for you to provide feedback on current and future service delivery.

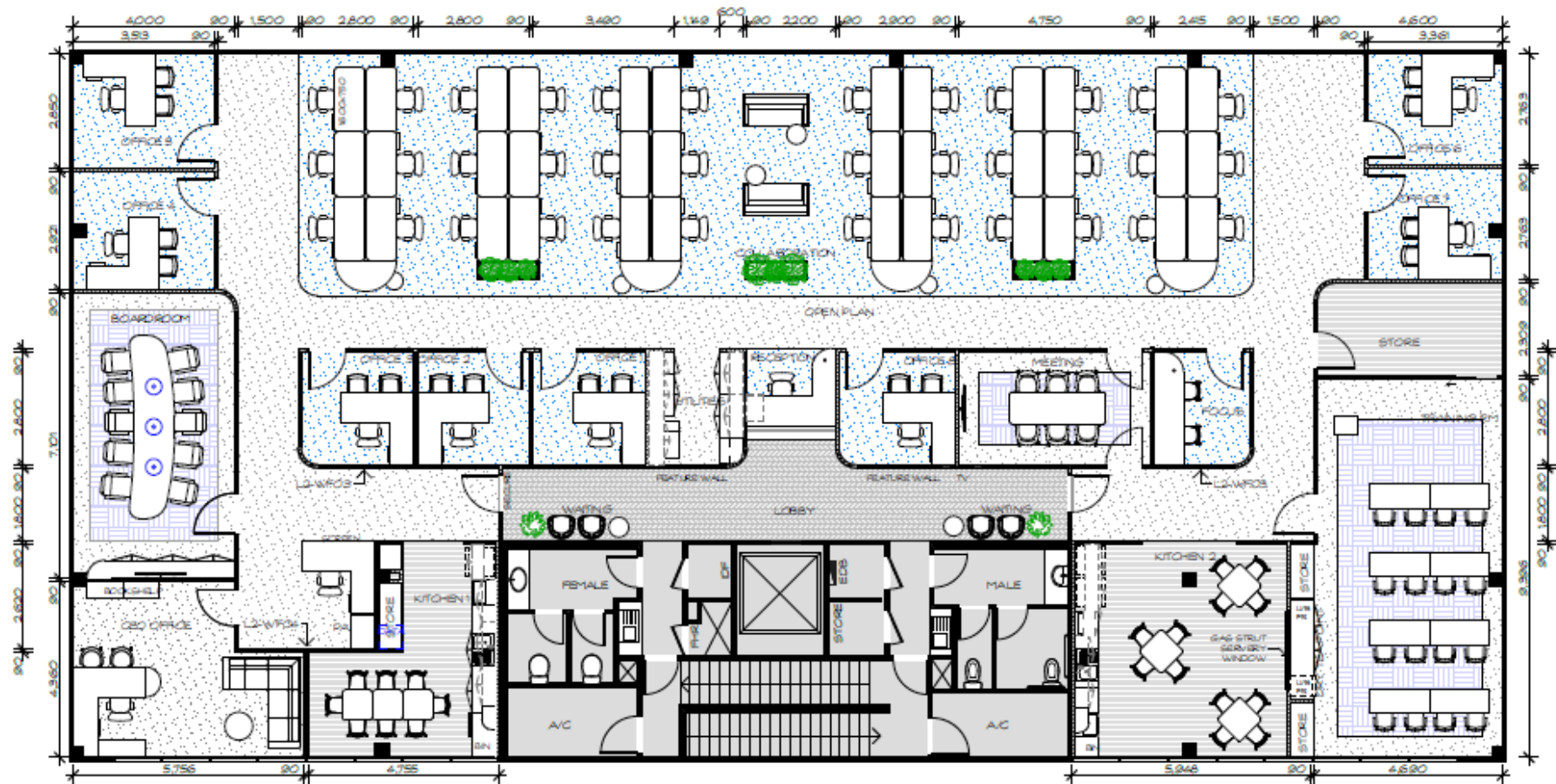
Its Not Too Late to Provide Feedback

Maroochydore AMS Community
Feedback Form



Have Your Say

Maroochydore Headoffice Fit-Out Update



1

L2 - Concept Plan
1:125

Have Your Say



Nambour



Caloundra



Maroochydore



Noosaville

Yarning with our Elders was a heartwarming and humbling experience for staff that attended the sessions. We were met with genuine support, interest and honest feedback from a diverse mix of grassroots, professional and cultural views.

NCACCH gathered the following key feedback

- Community are encouraged to stay with their current Doctor - the AMS works in complimentary care
- Be nice to have green space to use outside of the AMS
- Can NCACCH use volunteers to assist
- Service visits to be considered eg Centrelink, Legal Aid, JP etc
- Out of normal business hours appointments to be considered
- Cost effective transport service is a must
- Increased cultural, children, youth and parenting services/support



Our community was very engaging and provided great feedback from a patient perspective. Smaller attendance numbers allowed staff to spend more one-on-one time with attendees to go over the fit-out design in more detail.



Nambour

Key feedback continued

- Overall excitement that an AMS is opening on the Sunshine Coast
- When will the next one open and where will it be
- Positive response on the clinic and head office fit-out design
- Majority of attendees happy with the new logo, colours and new name for the AMS
- Additional allied health services eg physio, OT, podiatry, speech
- Dental services from the AMS would be good
- Aged Care residential services
- Rehabilitation services eg alcohol and drugs

Cooroy



Coolum



Golden Beach

Maroochydore

Community Consultations



NCACCH is Re-Branding

As NCACCH continues to evolve, the Board have decided to refresh its logo and colours based off our 20 year artwork that was co-designed with Traditional Custodian, Lyndon Davis, in 2019.

Using vibrant colours that showcase the Sunshine Coast, Noosa and Gympie changing landscape, this beautiful painting depicts the continuing journey of NCACCH and the community and Elders it serves. Furthermore, the addition of symbolic local animals and vegetation signifies the diversity of our footprint.

'Our new logo and branding is not about forgetting our history, it's about acknowledging our trailblazers as well as recognising our future young leaders who will continue to grow the service.'

Sharelle Eggmolesse, CEO



Artwork By: Lyndon Davis

Re-Branding

"Honouring Our Past, Embracing Our Future: Our Brand New Story"

Sharelle Eggmolesse, CEO



Re-Branding



AMS Services

- Consultations
- 715 Health Checks
- Care Plans
- Chronic Disease Management
- Child and Maternal Health
- Tackling Indigenous Smoking
- Men's and Women's Health
- Sexual Health
- Transport

Allied Health

- Eye Clinics (optometrist)
- Ear Checks (audiologist)
- Lung Clinics (respiratory)
- Pain Clinics
- Mums and Bubs Clinics (Midwife)
- Mental Health (psychologist)
- Dietitian
- Community Pharmacist



New / Future Services

- Allied Health on Staff
- Increased Specialist Services
- Social, Emotional and Wellbeing Service
- Aged Care – CHSP and Support At Home
- Mobile Health Clinic (MobPod)